



Ci80QR

Information Sheet



The quality of a speaker is no less important just because it's out of sight - in fact, with ceiling-mounted units, it can be more so. Designed to smoothly integrate and architecturally match with existing downlighting sharing the same size bezel, KEF's trademark Uni-Q® technology has a decisive performance advantage in these applications, because each point source

driver array evenly disperses the sound, ensuring a smooth frequency response over a large area to create a spacious three-dimensional soundscape with genuine texture and depth.

With a Uni-Q array of 80mm (3"), the Ci80QR is as satisfyingly musical to hear as it is neat in appearance.

Features and Benefits:

Purpose built for flush mounting into walls and ceilings these are the latest addition to the KEF Uni-Q Custom Installation series. Providing a compact solution to the problem of Hi-Fi quality sound from an in-wall/ceiling speaker, the 80QR consists of a polypropylene cone LF driver with the HF unit mounted at the acoustic centre of the LF unit.

The bezel and grill can be painted to match the interior décor.

Ci series
custom installation speakers

KEF®

KEF Audio (UK), Eccleston Road, Tovil, Maidstone, Kent, ME15 6QP U.K. Telephone: + 44 (0) 1622 672261. Fax: + 44 (0) 1622 750653

www.kef.com

KEF America, 10 Timber Lane, Marlboro, New Jersey, 07746 USA. Telephone: + 1 732 683 2356. Fax: + 1 732 683 2358

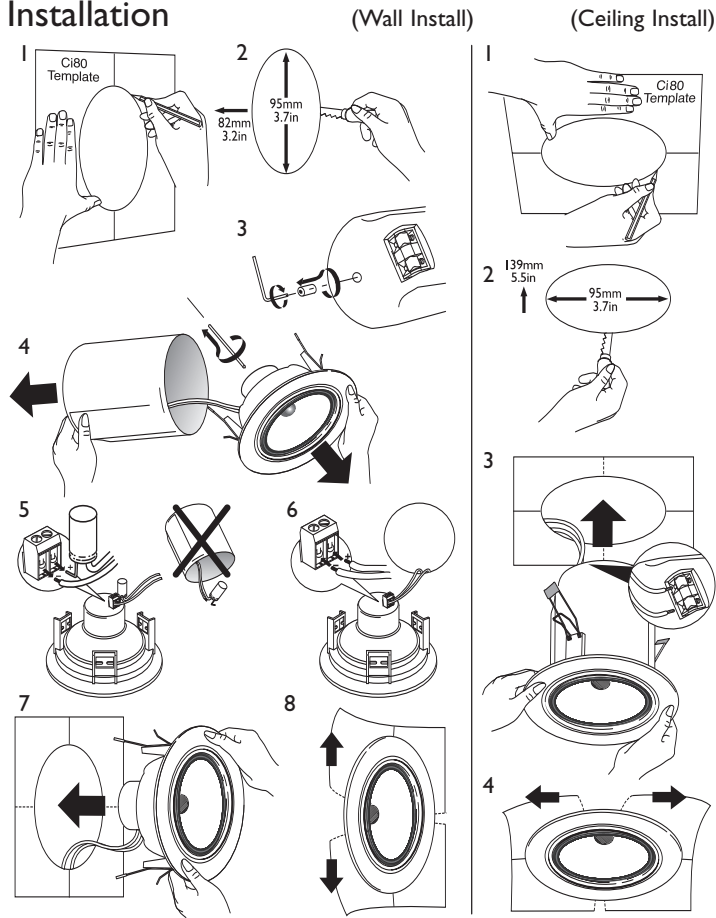
www.kefamerica.com

GP Acoustics GmbH, Heinrichstraße 51, D-44536 Lünen, Deutschland. Telephone: +49 (0) 231 9860-320. Fax: +49 (0) 231 9860-330.

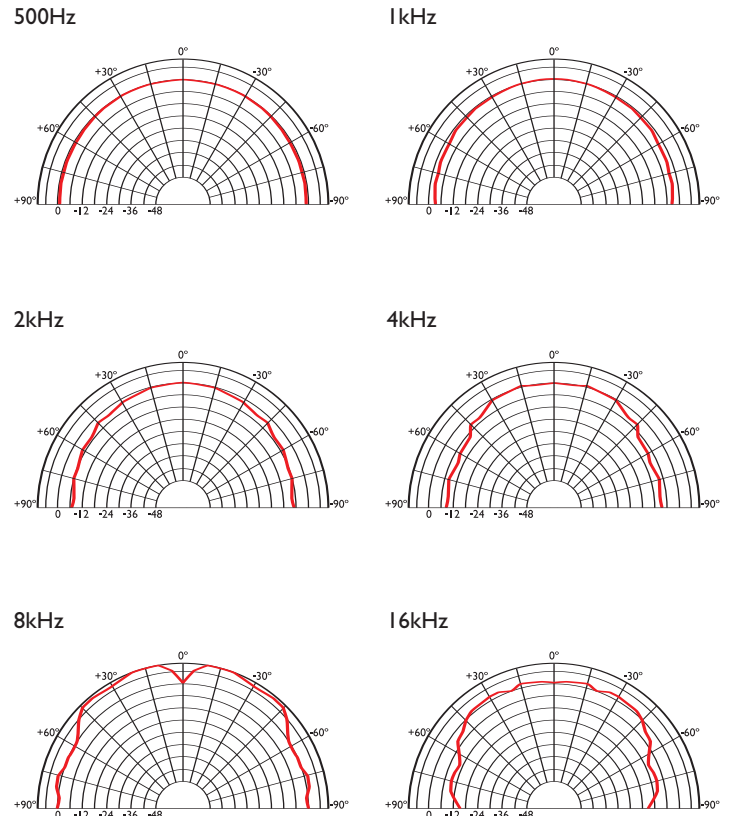
www.kefaudio.de

Ci80QR

Installation



Polar graphs



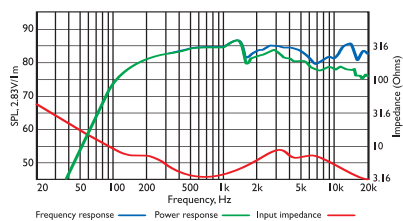
Architectural specifications:

The Ci Series Ci80QR comprises Uni-Q® 15mm aluminium dome tweeter with 80mm white polypropylene bass/mid unit with double neo compound magnet system. Performance should meet or exceed the following criteria: frequency response

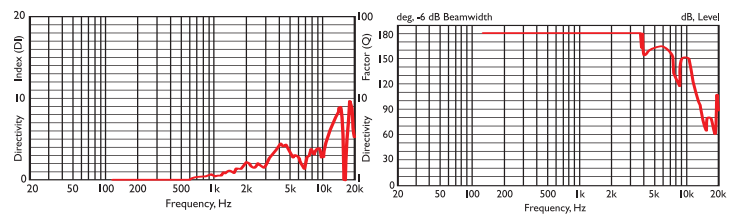
1 metre on-axis with swept sine wave shall be 130Hz to 27kHz, sensitivity shall be at least 85dB for 2.83V@1m. The impedance shall be 4 ohms. The Ci Series Ci80QR is best suited where high quality music and speech reinforcement applications require hi-fi performance such as:

- Multi Room systems.
- Home Theatre systems.
- Lounges, Bars, Boutiques.
- Boardrooms & Offices.

Frequency / Power response, Input impedance



Directivity Index / Beamwidth



Specifications

Frequency range	130Hz - 27kHz*	100Hz - 27kHz**
Sensitivity (2.83v @ 1m)	85dB	
Rec. amplifier power	10 - 50W	
Nominal Impedance	4Ω (min. 3.2Ω)	
Crossover Frequency	3kHz	

Enclosure material	ABS	
Terminals	spring terminals up to Ø2.5mm (0.1") conductor	
Dimensions (Ø x depth)	Ø103 x 138 mm, 4.1 x 5.5 in.*	Ø103 x 30 mm, 4.1 x 1.2 in.**
Net weight	0.7kg (1.54lbs)*	0.6kg (1.32lbs)**

*With back can **Without back can